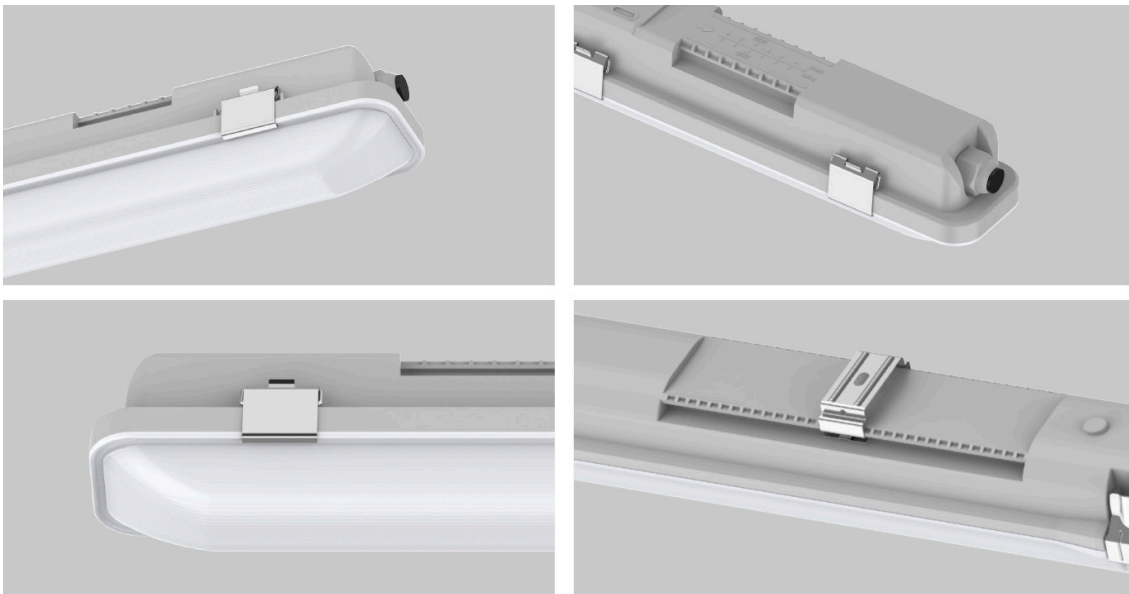


# MAVERICK Batten Lights



Cost Effective - Quad Wattage - Tri-Colour - IP65 - High Lumens

Model	Wattage	Type	IP Rating	Lumens	Colour	Warranty
LPMAY	25/30/35/40w	Light Fitting	IP65	2,850 / 3,830 / 4,470 / 5,000	3 / 4 /57k	5 years
LPMAY-MS	25/30/35/40w	Accessory (MS)	IP65	2,850 / 3,830 / 4,470 / 5,000	3 / 4 /57k	5 Years
LPMAY-EMG	25/30/35/40w	Accessory (EMG)	IP65	2,850 / 3,830 / 4,470 / 5,000	3 / 4 /57k	3 Years



### Features & Benefits

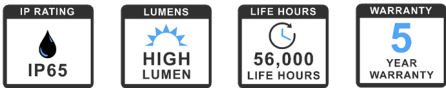
- Quad-wattage with inbuilt dip-switch
  - PC diffuser for anti-glare
  - Rear or side power entry
  - Large power terminal for easy connection
  - High quality driver ensuring excellent working performance
- SS fixing clips
  - IP65 rated
  - IK8 rated
  - SAA Approved
  - Vandal resistant
  - Quick Fit Motion Sensor Accessory Not Included
  - Emergency Option available

### Dimensions & Weight

Model	Length	Width	Height	Net Weight
LPMAY	1165mm	75mm	80mm	1.1 Kg's
LPMAY-MS	Accessory (Motion Sens)	-	-	-
LPMAY-EMG	1165mm	75mm	80mm	1.89 Kg's



### Emergency Specifications



Emergency Class	Wattage	Battery Duration	Charge Time	Battery Type	Emergency Power
C0: D63 / C90: D34	Mixed - Above	3 Hours	15 + Hours	LiFePo4 - Long Life	2w - Non & Maintianed - Both

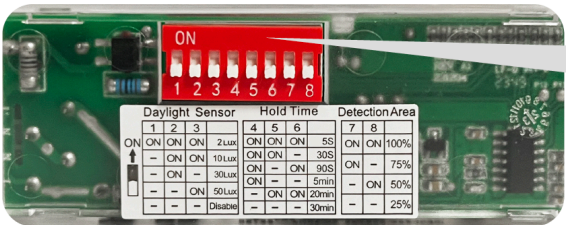
### Technical Specifications

Voltage AC220-240V	Wattage 25/30/35/40w	Power Factor >0.9	Beam Angle 120°	Colour 3,000 / 4,000 / 5,700k	Life Cycle 56,000 Hrs
IP Rating IP65	EMG Option Yes - Accessory	CRI >80	Sensor Option Yes - Accessor	Dimmable Yes (With sensor)	Heat Rating -20°c to +40°c

Cost Effective - Quad Wattage - Tri-Colour - IP65 - High Lumens

## Accessories

### Motion Sensor Accessory

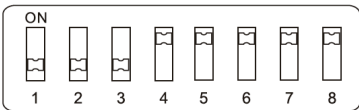


Daylight Sensor			Hold Time			Detection Area	
1	2	3	4	5	6	7	8
ON	ON	ON	2Lux	ON	ON	5S	ON
-	ON	ON	10Lux	ON	ON	30S	ON
-	ON	-	30Lux	ON	-	90S	-
-	ON	ON	50Lux	-	ON	20min	ON
-	-	-	Disable	-	-	30min	-

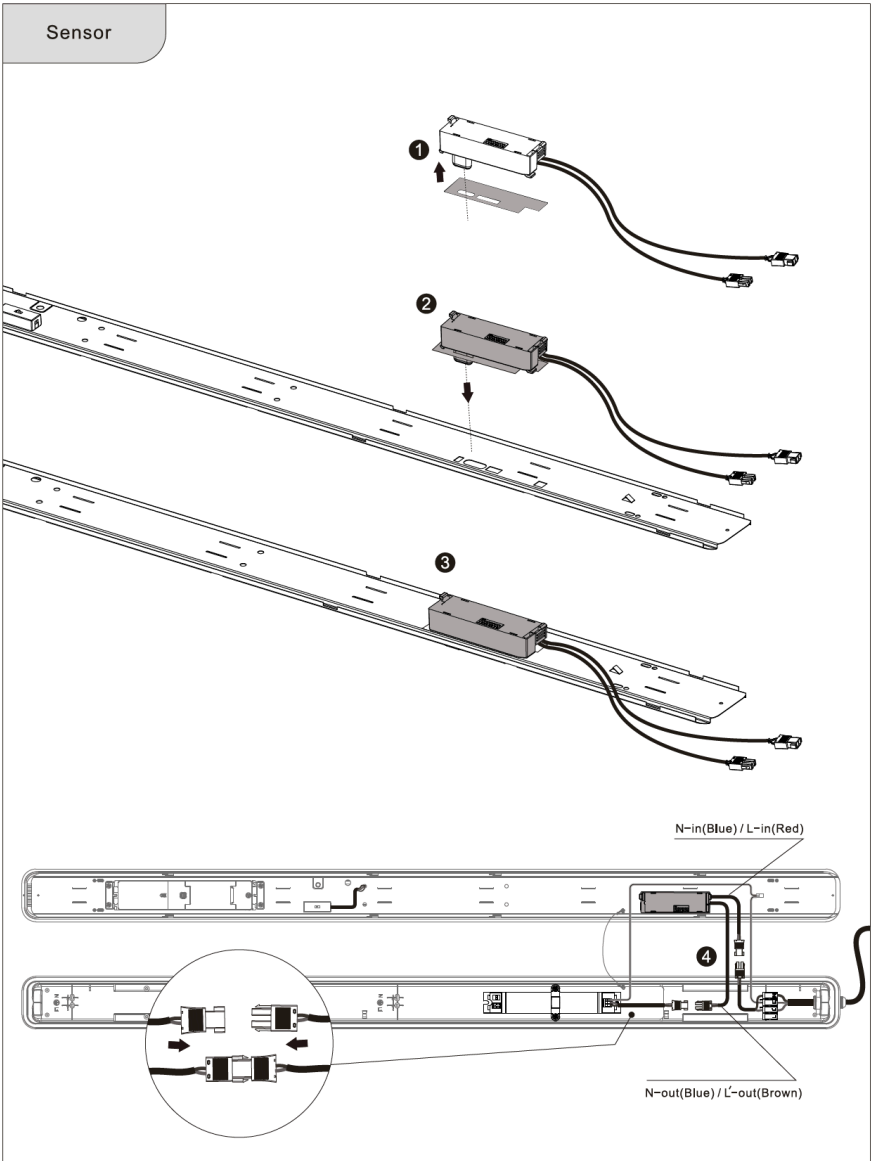
Daylight Sensor			Hold Time			Detection Area	
1	2	3	4	5	6	7	8
ON	ON	ON	2Lux	ON	ON	5S	ON
-	ON	ON	10Lux	ON	ON	30S	ON
-	ON	-	30Lux	ON	-	90S	-
-	ON	ON	50Lux	-	ON	20min	ON
-	-	-	Disable	-	-	30min	-

Factory setting:

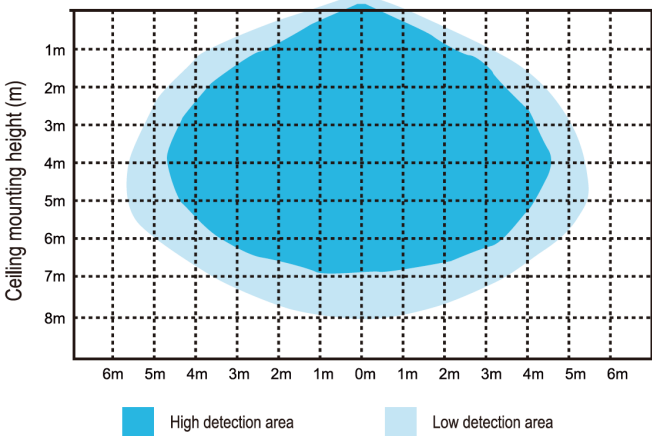
Factory settings		
Detection Area	Hold Time	Daylight Sensor
100%	5S	Disable



Installation - 1 min to conduct



Ceiling Mounting pattern(Unit: m )



Wall Mounting pattern(Unit: m )

