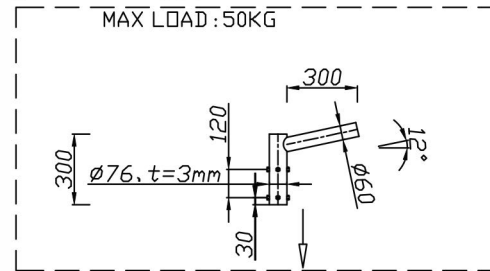


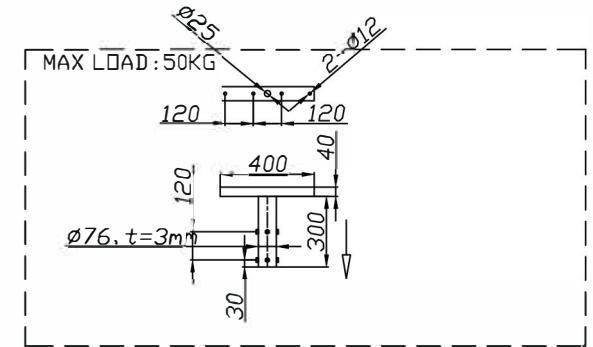
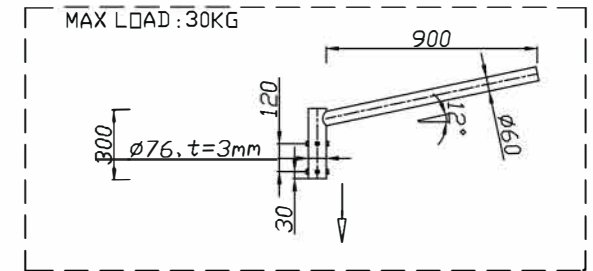
LPLPEA300

MAX LOAD : 50KG

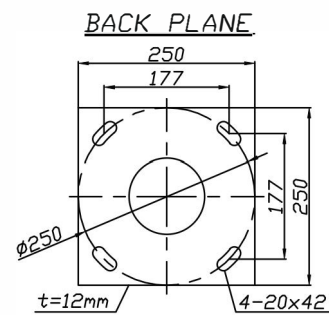
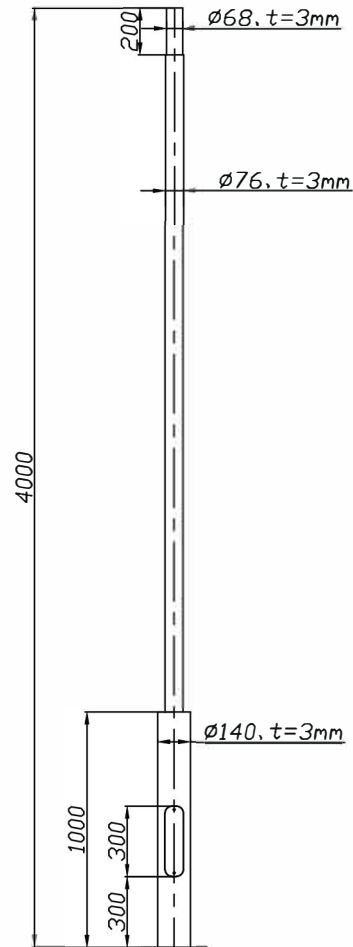


LPLPEA900

MAX LOAD : 30KG

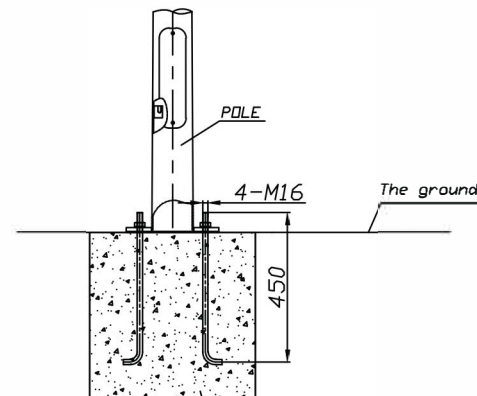
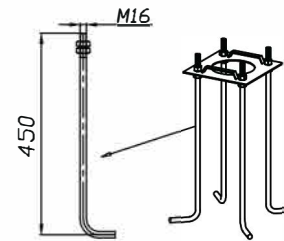


LPLPEATB



ANCHOR BOLTS

4 pcs



Typical concrete footing. Subject to engineered Geo report provided by others

TECHNICAL NOTES

- All dimensions are in millimeters
- Steel thickness at 3mm
- Galvanizing thickness at 85um
- Poles powder-coating to a dark Grey colour
- Pole and extension warranty - 3 years*
- Engineering certification for the footing to be provide by others

PRODUCT NAME		LPLP4m		
DESIGN			MATERIAL	Q235
			QUANTITY	1 Of
APPROVAL	Yes	06.15.20	WEIGHT	34 Kg's