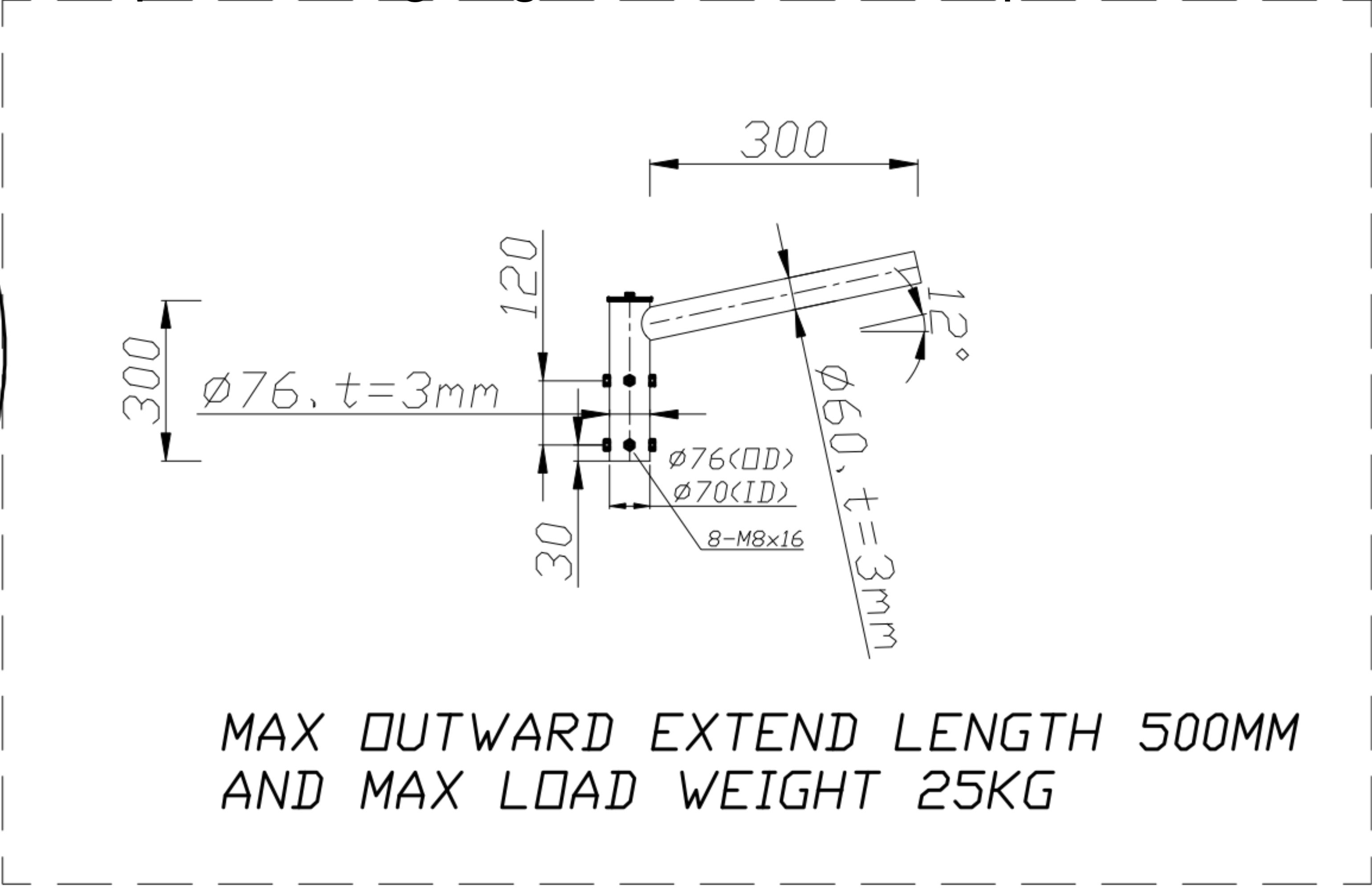
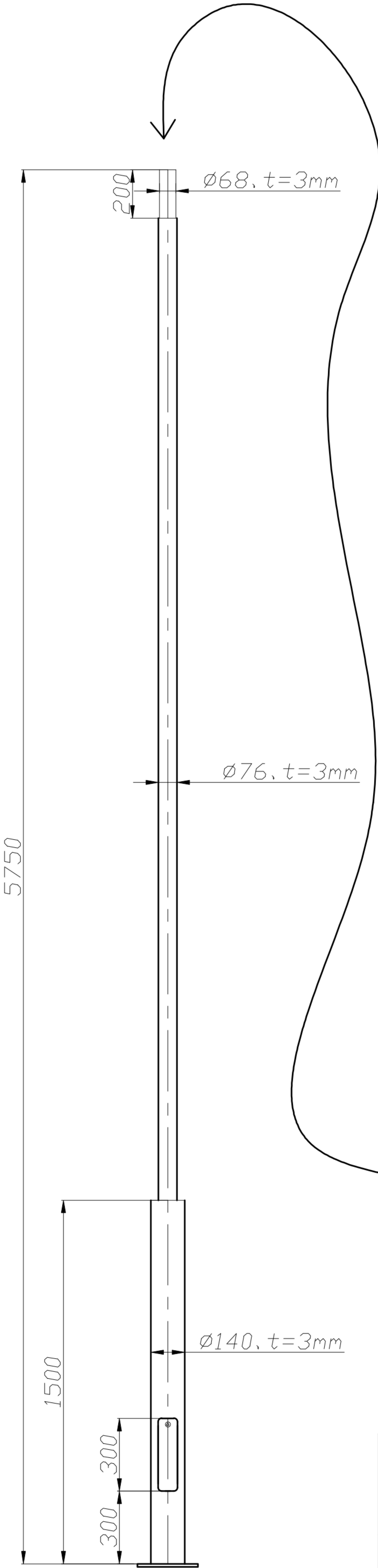
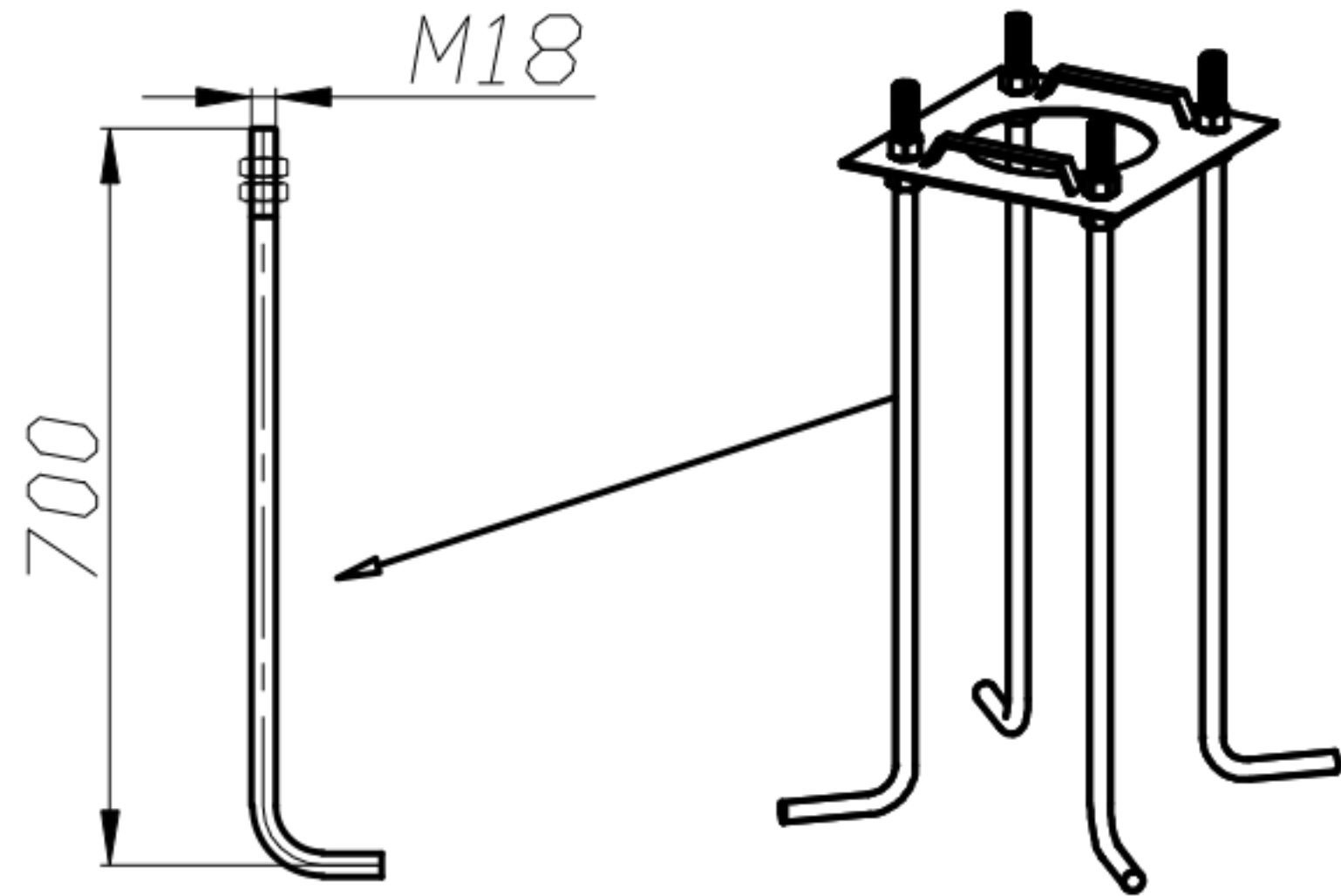


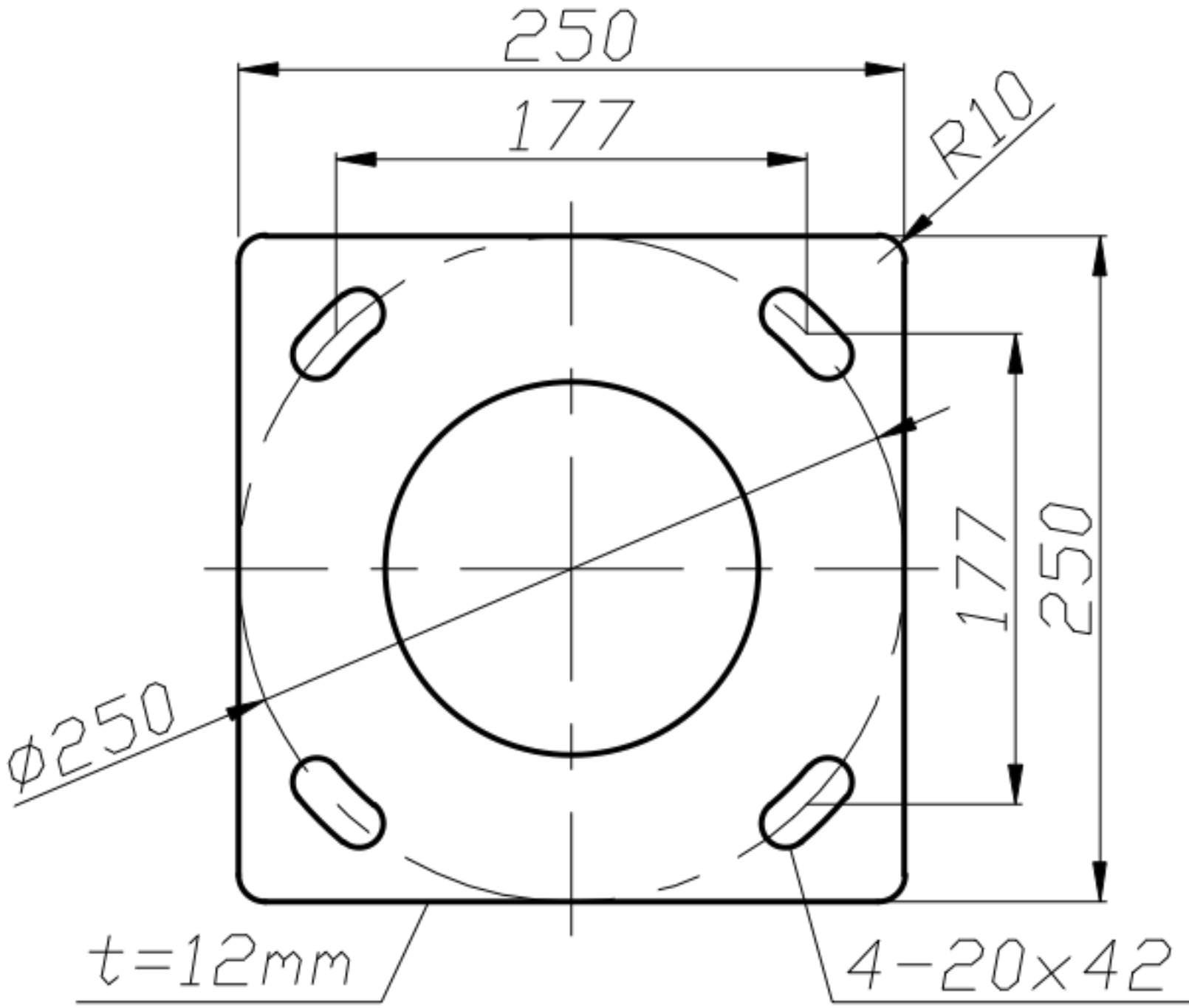
Example load weighting with 300mm Pole top extension



ANCHOR BOLTS
4PCS




BACK PLANE



TECHNICAL NOTES

- All dimensions are in millimetres
- Steel thickness at 3mm
- Galvanising thickness at 85um
- Poles powder-coating to a dark grey colour
- Pole and extension warranty - 3 years*
- Engineering certification for the footing to be provide by others

 LightPlanet Bright technology		Light Planet Pty Ltd 12 Stafford ST Huntingdale, Vic 3166 1300 533 489		
PRODUCT NAME		5.75M+2M POLE		
DESIGN	施明	MATERIAL	Q235	
		QUANTITY	1 Of	
APPROVAL	YES	09.17.24	WEIGHT	58Kg (Total Weight)